



**GREATER PHILADELPHIA**  
***FUTURES* GROUP**  
ENGAGE, COLLABORATE, ENVISION



# MEETING 3

**December 10, 2014**

# Agenda

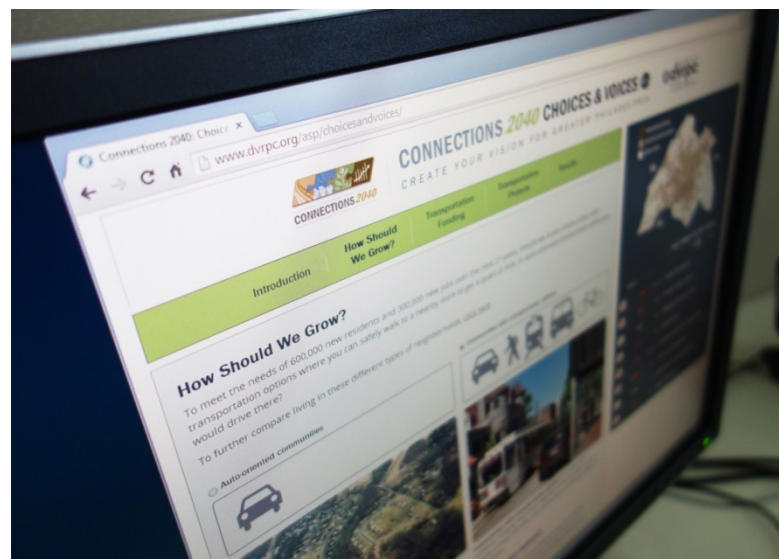
---

- Where We Are Going
- Impact-Likelihood Voting Results
- Structuring Forces
- Breakout Groups
  - What are the potential outcomes?
  - What challenges and opportunities will arise in the region?
  - What action steps can the region can take to prepare for this driving force?
  - **Voting:** Which types of transportation investments will be most important as a result of the force?
- Meeting Recap

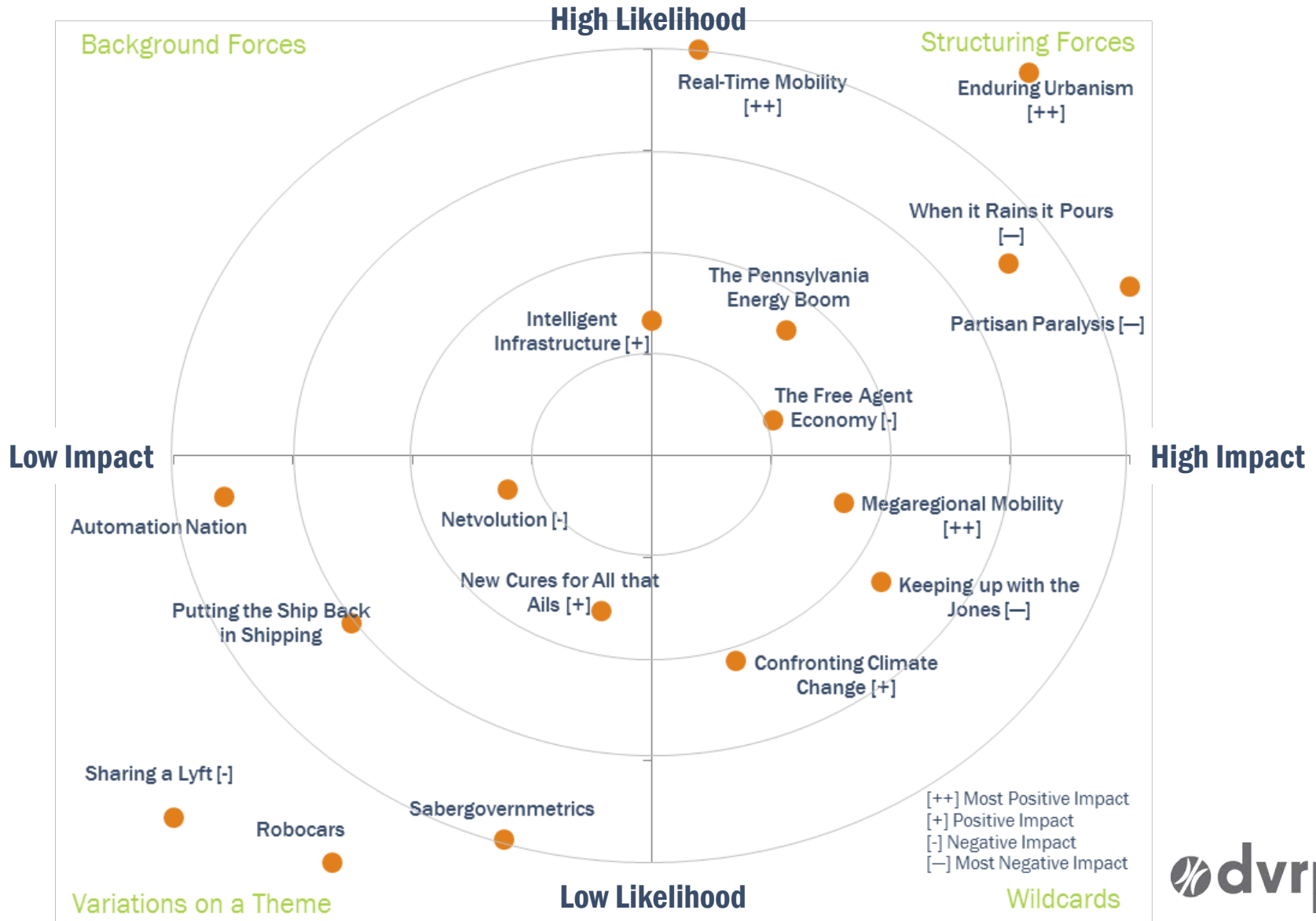
# Where are We Going

---

- DVRPC Working Groups
  - Goods Movement Task Force
  - Environmental Justice Working Group
  - Healthy Communities Working Group
  - Regional Community & Economic Development Forum
- DVRPC 50<sup>th</sup> Anniversary Survey
- Choices & Voices v3.0
- Written Report
- 2045 Long-Range Plan



# Impact-Likelihood Voting Results



# Enduring Urbanism



Photo: Lucian Perkins/For The Washington Post



Image: Michael Falco for the NY Times



Photo: www.phys.org



Image: WikiTrends

# Real-Time Mobility

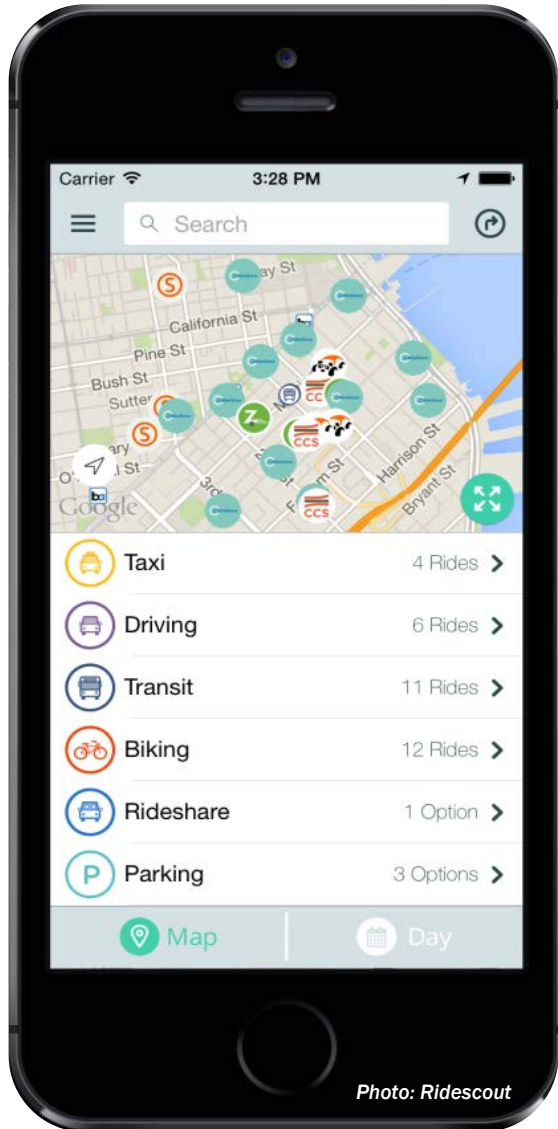


Photo: [www.frontporchdenver.com/ride-your-b-cycle-on-down-to-the-front-porch/](http://www.frontporchdenver.com/ride-your-b-cycle-on-down-to-the-front-porch/)

Photo: [www.wikipedia.org](http://www.wikipedia.org)

Photo: [www.triadstrategies.typepad.com/](http://www.triadstrategies.typepad.com/)

# When it Rains it Pours

---



Photo: NOAA via Wikimedia Commons

# The Pennsylvania Energy Boom

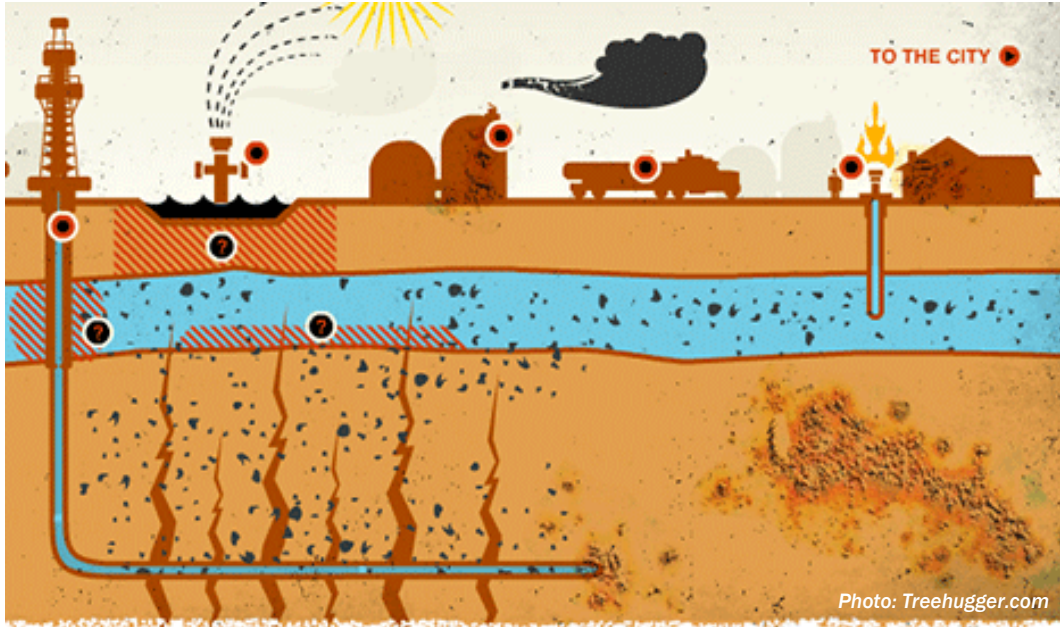


Photo: Treehugger.com



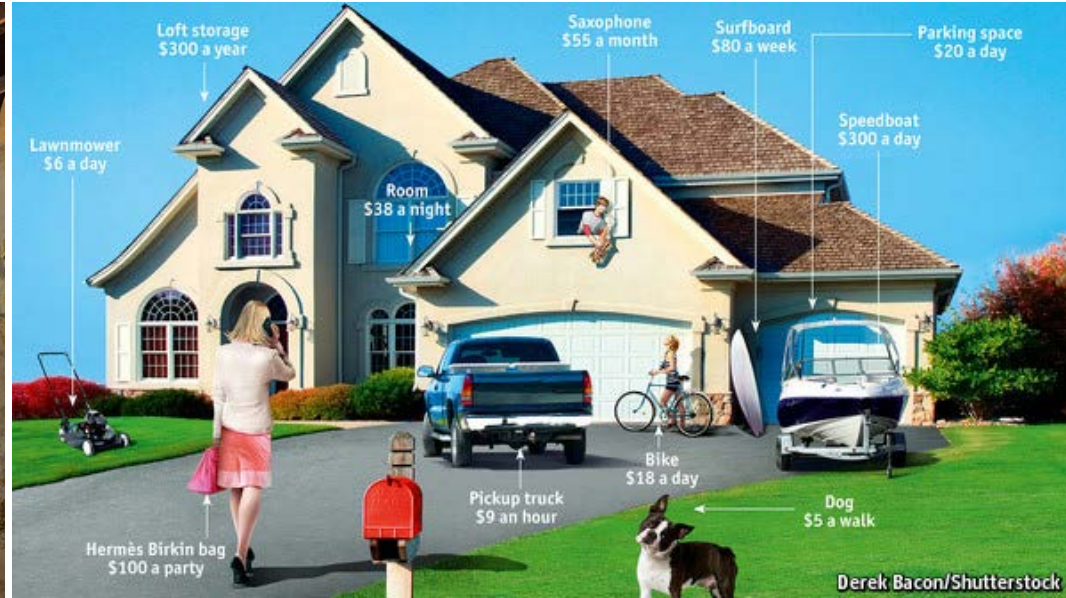
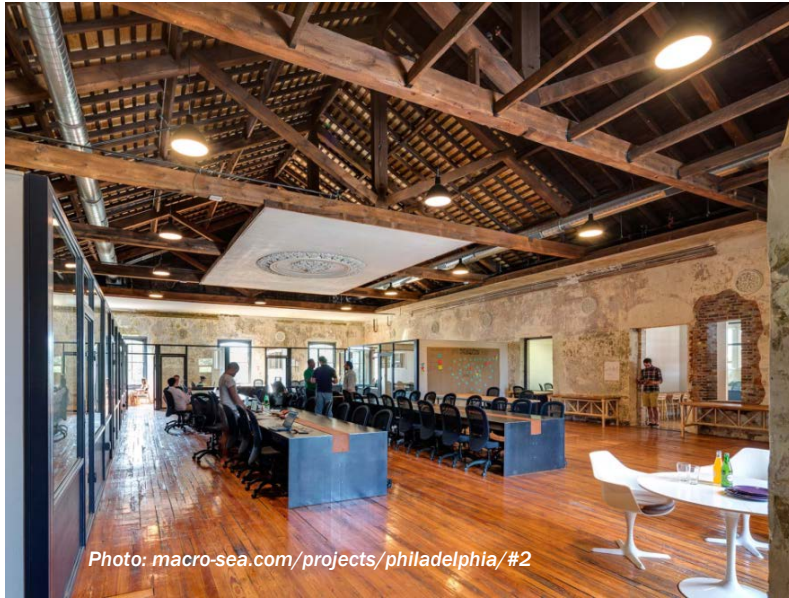
Photo: Flickr user PRR 6755



Photo: Kellie McGinn/Philadelphia Energy Solutions



# The Free-Agent Economy



# Background Forces & Assumptions

- Partisan Paralysis
- Intelligent Infrastructure
- Connected Vehicles
- Increasing Chronic Health Conditions
- Aging Population
- Panama Canal Widening
- Growing Demand for Same-Day Delivery
- Improving Freight Logistics
  - Efficiency
  - Redundancy
- Urban School Quality Driving Family Location
- More Immigration
- Declining Water Quality

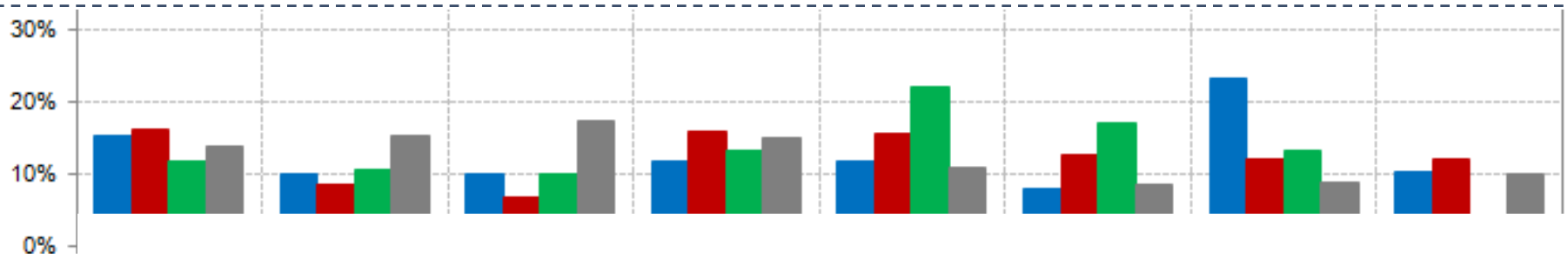
## 30-Year Forecasts

| Baseline Assumptions       | US    | Region |
|----------------------------|-------|--------|
| Annual Population Growth   | 0.7%  | 0.4%   |
| Annual Employment Growth   | 0.9%  | 0.4%   |
| Vehicle VMT                | 0.8%  | 0.3%   |
| Truck VMT                  | 1.4%  | 0.3%   |
| Annual Gasoline Cost       | -0.3% | N/A    |
| Annual GDP Growth          | 2.5%  | *      |
| Disposable Income / Capita | 1.8%  | *      |

\* Greater Philadelphia expected to slightly trail U.S. (Source: IHS Global Insight).

Source: FWHA, IHS Global Insight, and DVRPC

# Most Beneficial Investments



N-S Interstates

E-W Interstates

NHS Highways

Freight Connectors

Class I Rail

Local Rail

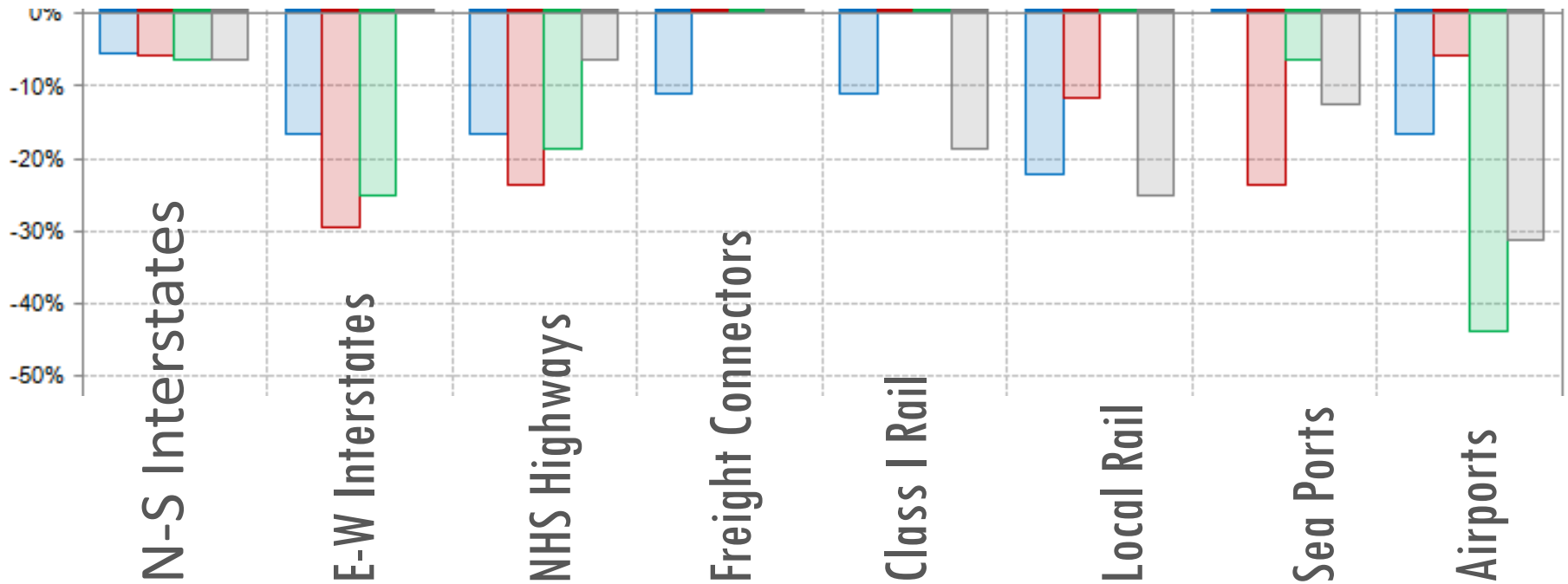
Sea Ports

Airports

Global Marketplace  
Naftastique

One World Order  
Technology Savior

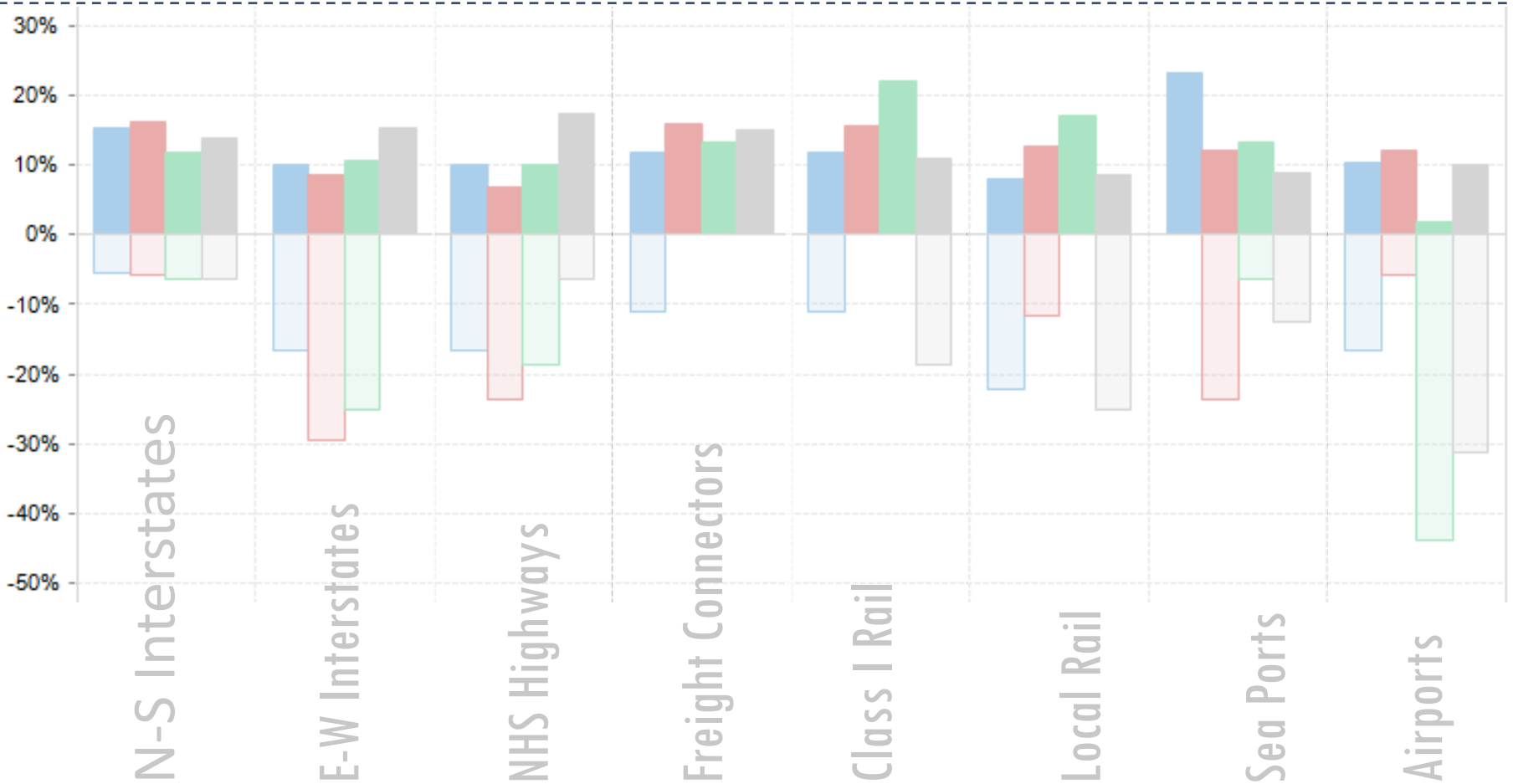
# Least Beneficial Investments



Global Marketplace  
Naftastique

One World Order  
Technology Savior

# Robust Investments



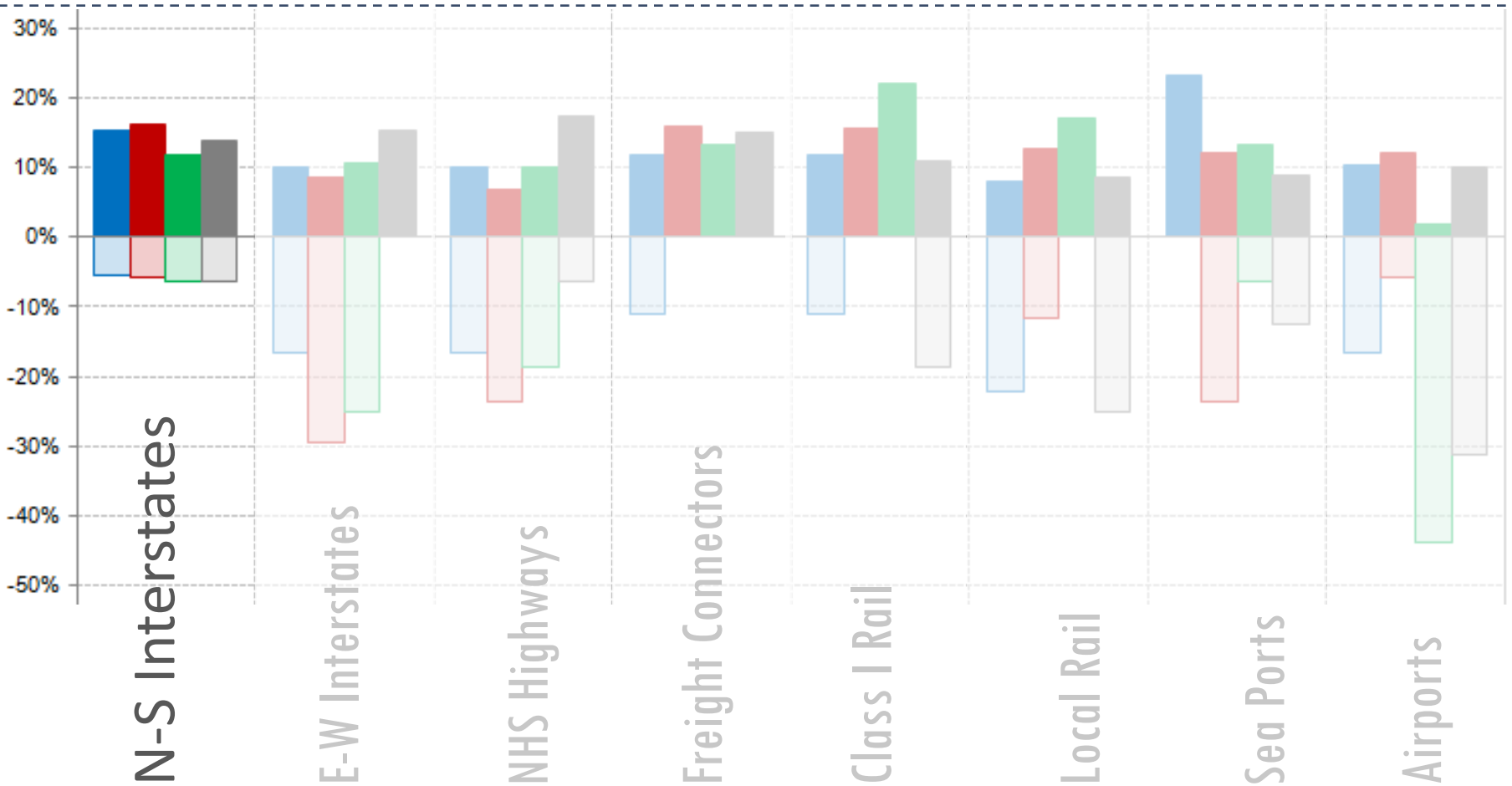
Global Marketplace

Naftastique

One World Order

Technology Savior

# Robust Investments



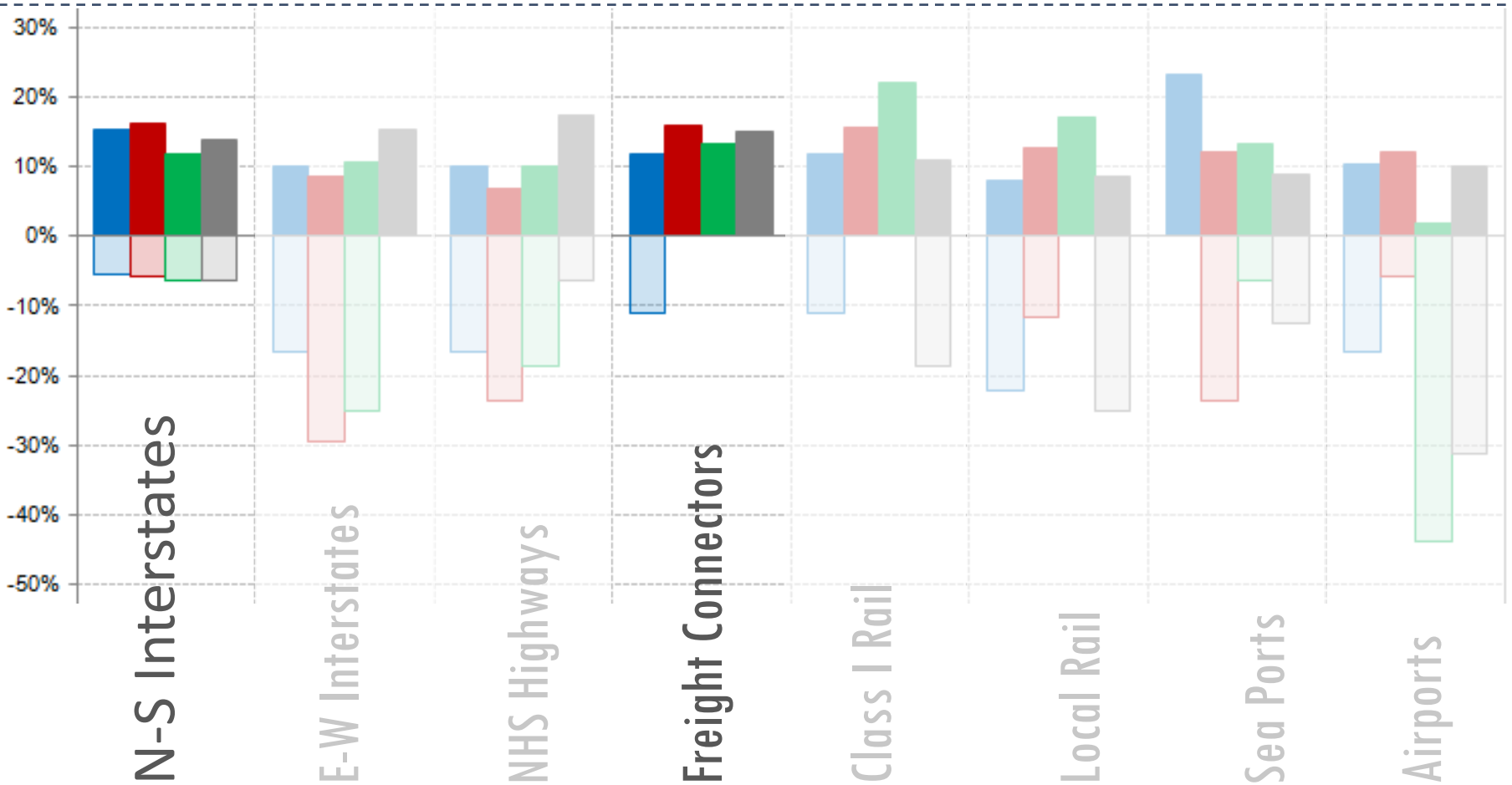
Global Marketplace

Naftastique

One World Order

Technology Savior

# Robust Investments



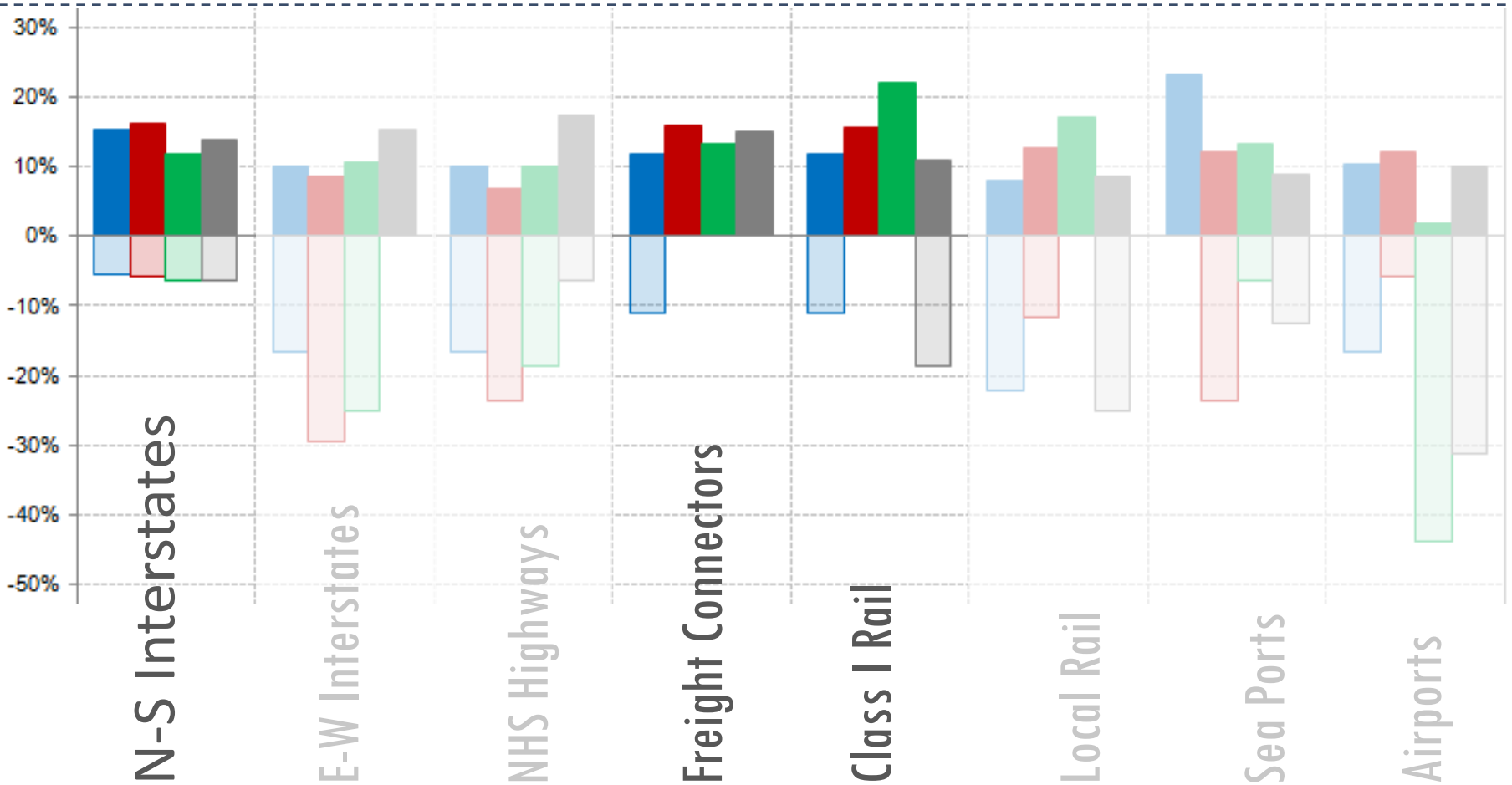
Global Marketplace

Naftastique

One World Order

Technology Savior

# Robust Investments



Global Marketplace

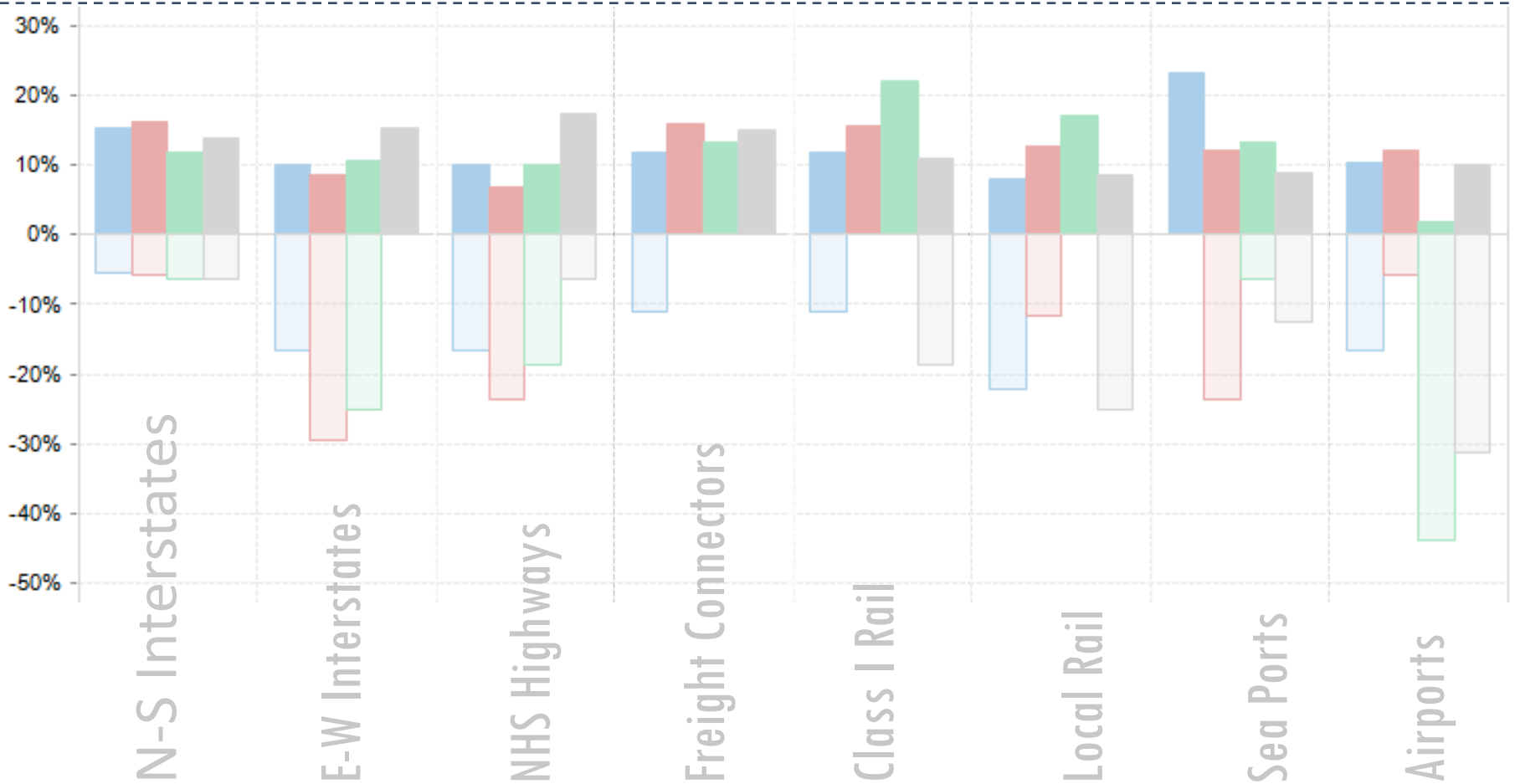
Naftastique

One World Order

Technology Savior



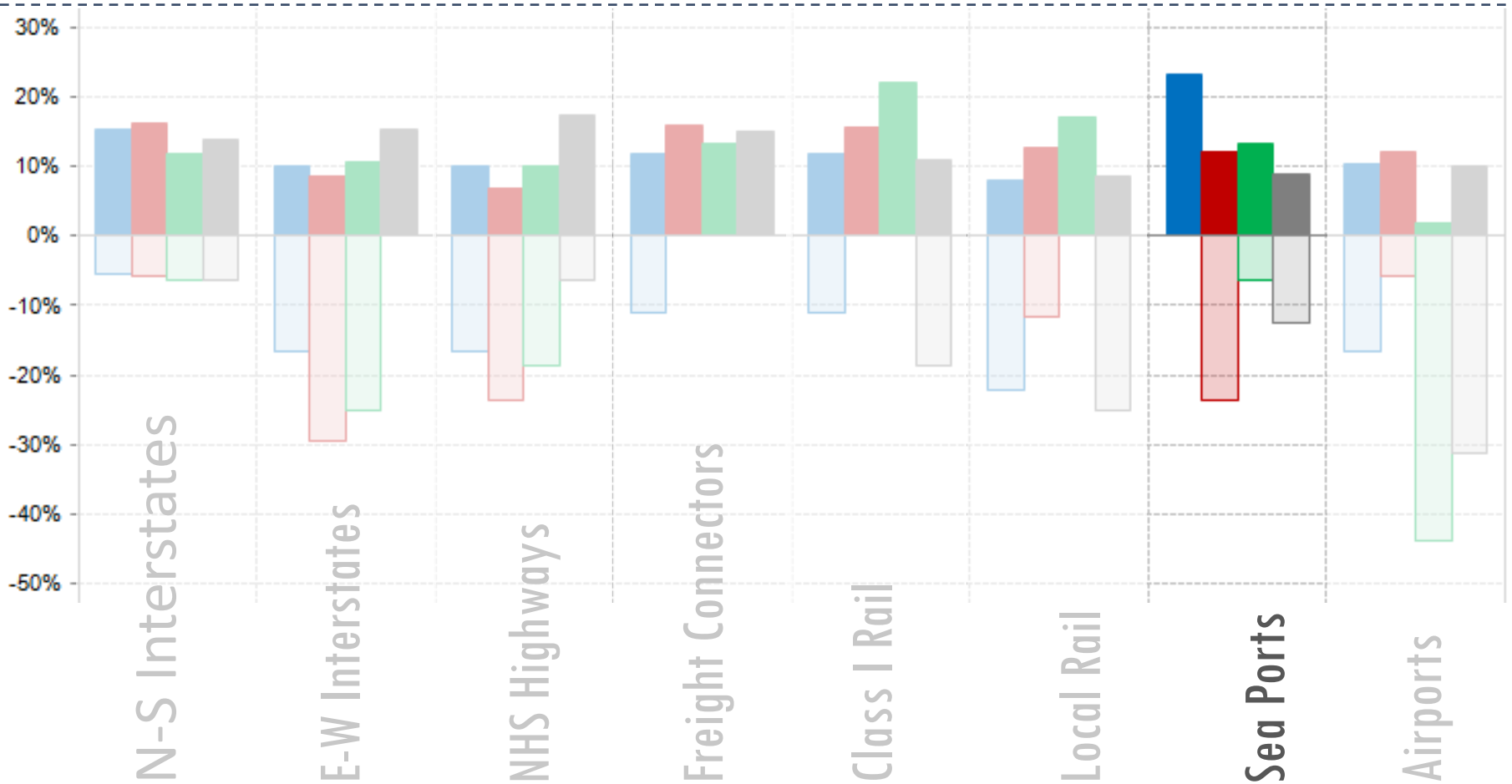
# Contingent Investments



**Global Marketplace**  
Naftastique

One World Order  
Technology Savior

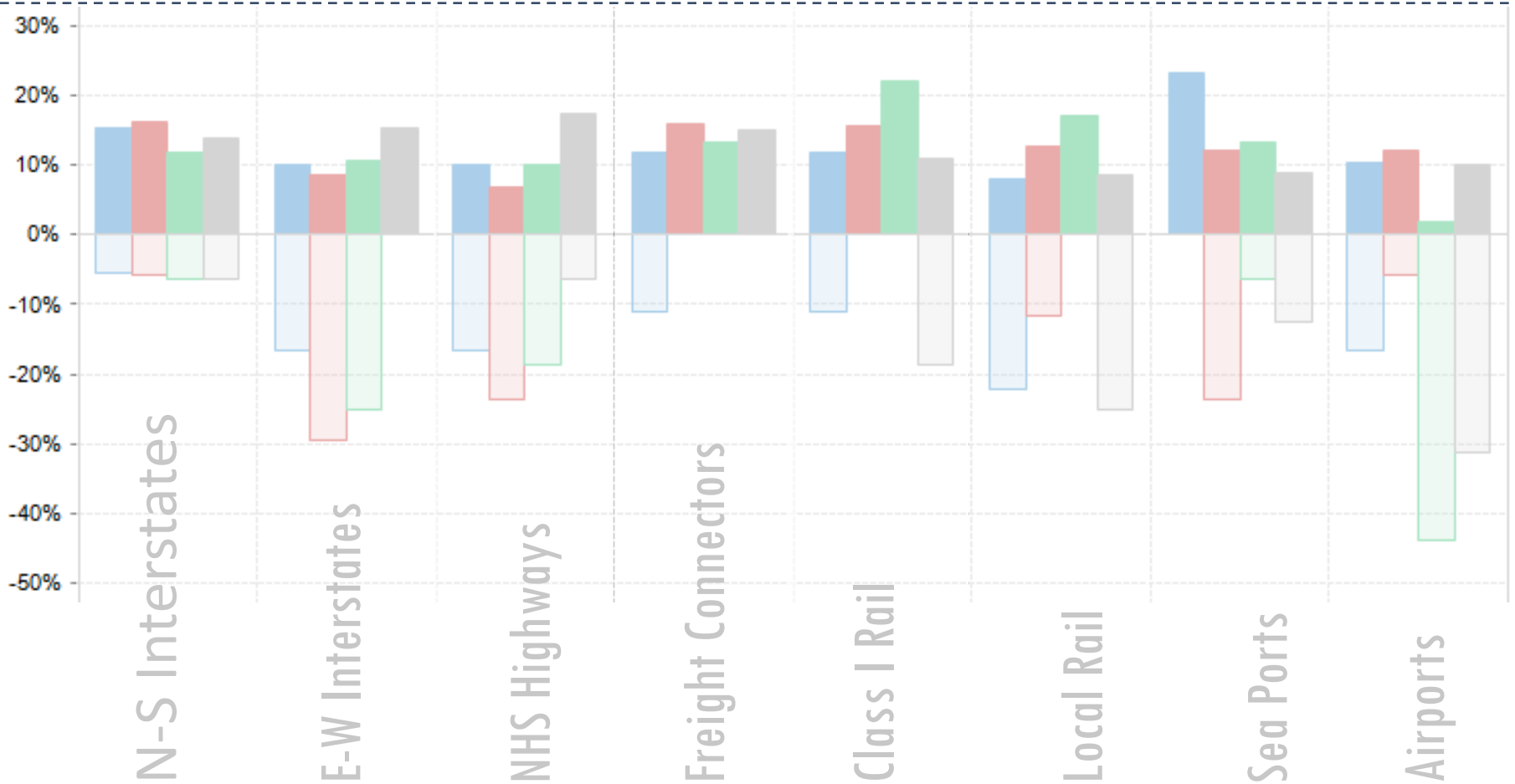
# Contingent Investments



■ Global Marketplace
   
■ Naftastique

■ One World Order  
■ Technology Savior

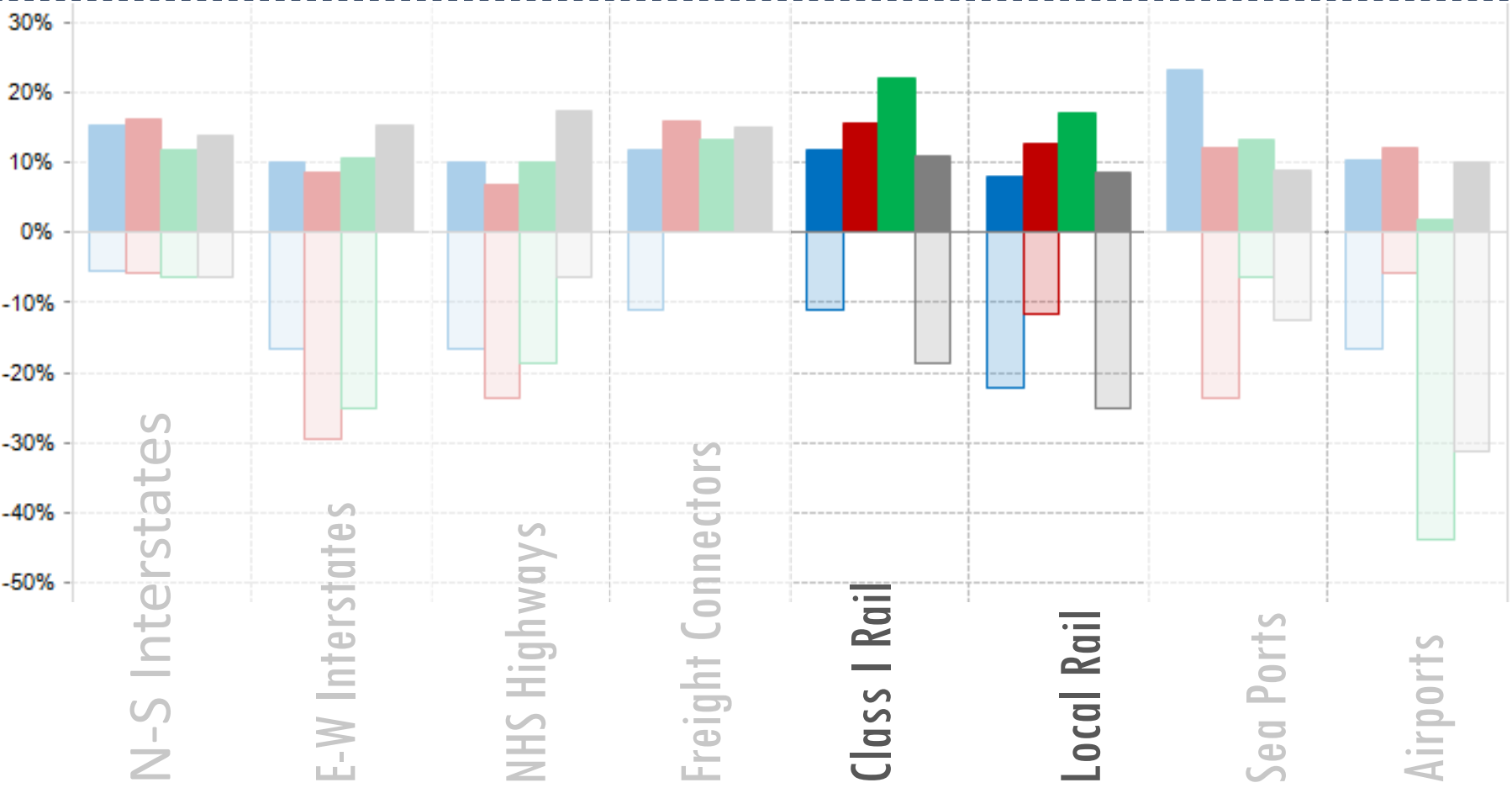
# Contingent Investments



Global Marketplace  
Naftastique

One World Order  
Technology Savior

# Contingent Investments



Global Marketplace  
Naftastique

One World Order

Technology Savior

